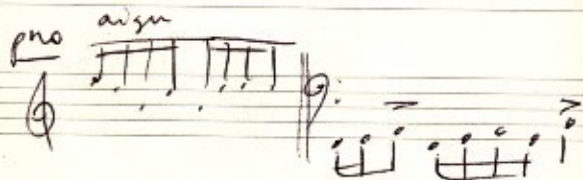


Sax piano
 vln vc
 fl cl

actif dense
 concentré mus. que de
 combat



Sax solo (sax) (sax) fl fl
 fl vc cl cl
 cl vln (sax) (sax)
 pno vln vc

fl cl (cristal) piment
 (aigu) (aigu)
 sax

les cordes
 piano cristallin
 un peu perdu vln son
 VC flûte
 archet sur
 touche

sommet cuis finamp
 final fl/cl/sax espace
 vln/vc/piano nuit et ombes



souffle feuilles
 eau (vln)
 fl-cl (sax)

mélodie lente
 sax. languoureux
 fl cl vln (sax) pno
 sax.

début \sharp \sharp \sharp \sharp

main agressive / clair

notes aigues
 aux cordes
 eau calme

Ténor

recherche
 insaisissable
 cherche sans
 les camp

Tén. (viol)

plus de
 mvt en acc.
 dans l'acc.

échange
 entre sax
 et pno et autres (v?)

Handwritten musical notation on the left page, consisting of five staves of music in treble clef with a key signature of one sharp (F#). The notation includes various rhythmic patterns and accidentals.

pno MD
 sax fl + cl harm. centre
 vln + vc harm.
 pno MG

Handwritten musical notation on the right page, consisting of six staves of music. The top staff has a circled section with the text "notes approx." next to it. The notation includes various rhythmic patterns and accidentals.

mt + interieur
 moyen → fin

éclat
 lumineux
 fleurisvar

s'évanouissant
 forcement
 effluve le vent

demander

Phase I feuilles

solo sax Th.A
 horizon cordes
 vagues bois
 pro X

fl. solo Th.B + Sax tenor
 cl. duo avec fl.
 vagues cordes

fl. la. 1. 2. →

Phase II

sax feuilles
 vide → cordes solos

pro acc. basse

fl/cl. feuilles

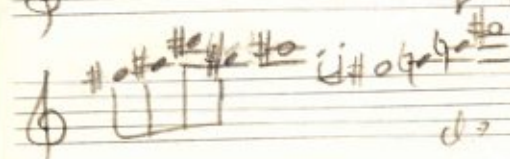
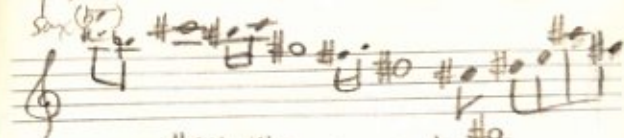
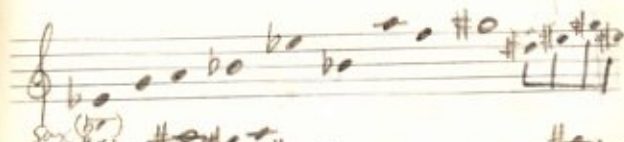
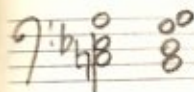
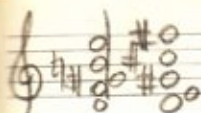
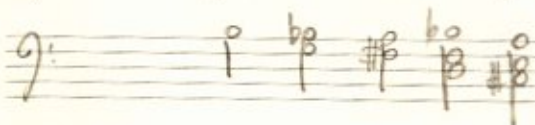
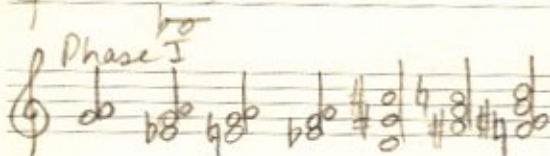
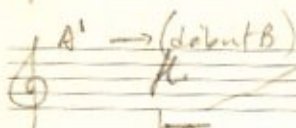
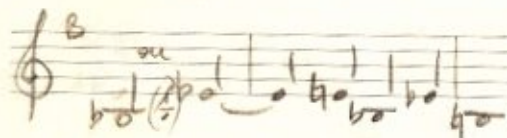
[avant pro solo]

Phase III

Sax → bois → cordes →

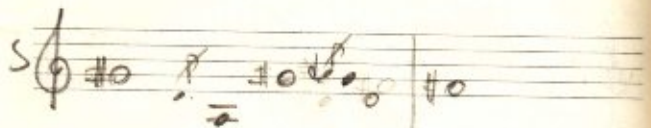
feuilles
cordes → sax → bois →

pno basse
acc.



F 

C 

S 

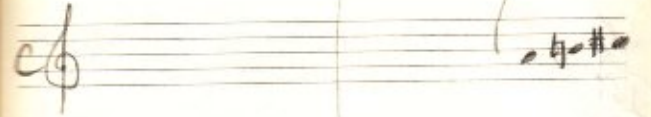


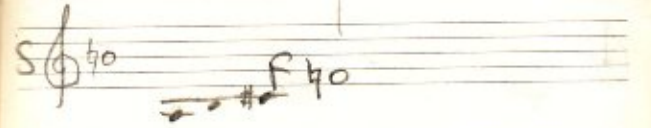
F 

C 

S 

F 

C 

S 



F 

C 

S 

Musical notation on a single staff, featuring a sequence of eighth notes with triplets indicated by the number '3' above the groups.

Musical notation on a single staff, featuring a sequence of eighth notes with triplets indicated by the number '3' above the groups.

Musical notation on a single staff, featuring a sequence of eighth notes with triplets indicated by the number '3' above the groups. A circled '1' and a circled 'V' are present on the left side.

Musical notation on a single staff, featuring a sequence of eighth notes with triplets indicated by the number '3' above the groups. A circled 'Vc' is present below the staff.

Musical notation on a single staff, featuring a sequence of eighth notes with triplets indicated by the number '3' above the groups. A circled 'Vc' is present below the staff.

Musical notation on a single staff, featuring a sequence of eighth notes with triplets indicated by the number '3' above the groups. The word 'Piano' is written above the staff, and '+Bum' is written below it.

Musical notation on a single staff, featuring a sequence of eighth notes with triplets indicated by the number '3' above the groups. A circled 'A' is present on the left side.

Musical notation on a single staff, featuring a sequence of eighth notes with triplets indicated by the number '3' above the groups. A circled 'A' is present on the left side.

Musical notation on a single staff, featuring a sequence of eighth notes with triplets indicated by the number '3' above the groups. A circled 'B' and a circled 'C' are present above the staff.

Musical notation on a single staff, featuring a sequence of eighth notes with triplets indicated by the number '3' above the groups. A circled 'D' is present above the staff.

Musical notation on a single staff, featuring a sequence of eighth notes with triplets indicated by the number '3' above the groups. A circled 'E' is present above the staff.

Musical notation on a single staff, featuring a sequence of eighth notes with triplets indicated by the number '3' above the groups. A circled 'F' is present above the staff.

Musical notation on a single staff, featuring a sequence of eighth notes with triplets indicated by the number '3' above the groups. A circled 'G' is present above the staff.

Musical notation on a single staff, featuring a sequence of eighth notes with triplets indicated by the number '3' above the groups. A circled 'H' is present above the staff.

Musical notation on a single staff, featuring a sequence of eighth notes with triplets indicated by the number '3' above the groups. The text 'Phase 2' and 'clar. do (bo)' is present above the staff.

Musical notation on a single staff, featuring a sequence of eighth notes with triplets indicated by the number '3' above the groups. The text 'Solo piano' is written below the staff.

Ph. III

Handwritten musical notation for the first system on the left page, featuring a treble clef staff with a key signature of one flat and a common time signature, followed by two bass clef staves with dense notation.

Handwritten musical notation for the first system on the right page, including a treble clef staff with a key signature of one flat and a common time signature, followed by two bass clef staves. Annotations include "plimit", "rep. sax", and "cl".

plimit

rep. sax

cl

Handwritten musical notation for the first system on the right page, including a treble clef staff with a key signature of one flat and a common time signature, followed by two bass clef staves. Annotations include "plimit", "rep. sax", and "cl".

solo sax ph. II mph

Handwritten musical notation for the second system on the left page, featuring a treble clef staff with a key signature of one flat and a common time signature, followed by two bass clef staves. The notation is less dense than the first system, with some notes marked with 'X' and 'f'.

Handwritten musical notation for the second system on the right page, including a treble clef staff with a key signature of one flat and a common time signature, followed by two bass clef staves. Annotations include "vtrc" and "f".

vtrc

f

Handwritten musical notation for the second system on the right page, including a treble clef staff with a key signature of one flat and a common time signature, followed by two bass clef staves. Annotations include "vtrc" and "f".

f *trillo* *sup*

sol *+* *fa* *+* *fa* *+* *fa* *+*

whistle tones *overblow* *sauffle*

mp

whistle

fl *mp*

3/4
4

Handwritten notes

9

Acc.

Handwritten musical notation for the first system. The top staff is in treble clef and contains two measures of music. Each measure begins with a triplet of eighth notes, indicated by a '3' above the notes. The notes are: G4 (sharp), A4 (sharp), B4 (sharp), C5 (sharp), D5 (sharp), E5 (sharp). The bottom staff is in bass clef and contains two measures of music. Each measure begins with a triplet of eighth notes, indicated by a '3' above the notes. The notes are: G2 (sharp), A2 (sharp), B2 (sharp), C3 (sharp), D3 (sharp), E3 (sharp).

Handwritten musical notation for the second system. The top staff is in treble clef and contains two measures of music. Each measure begins with a melodic line starting on G4 (sharp) and moving up to E5 (sharp). The notes are connected by a slur. The bottom staff is in bass clef and contains two measures of music. Each measure begins with a melodic line starting on G2 (sharp) and moving up to E3 (sharp). The notes are connected by a slur. Above the first measure of both staves, there is a marking that looks like a slash followed by 'trab'. Above the second measure of both staves, there is a marking that looks like a slash followed by 'trab'.